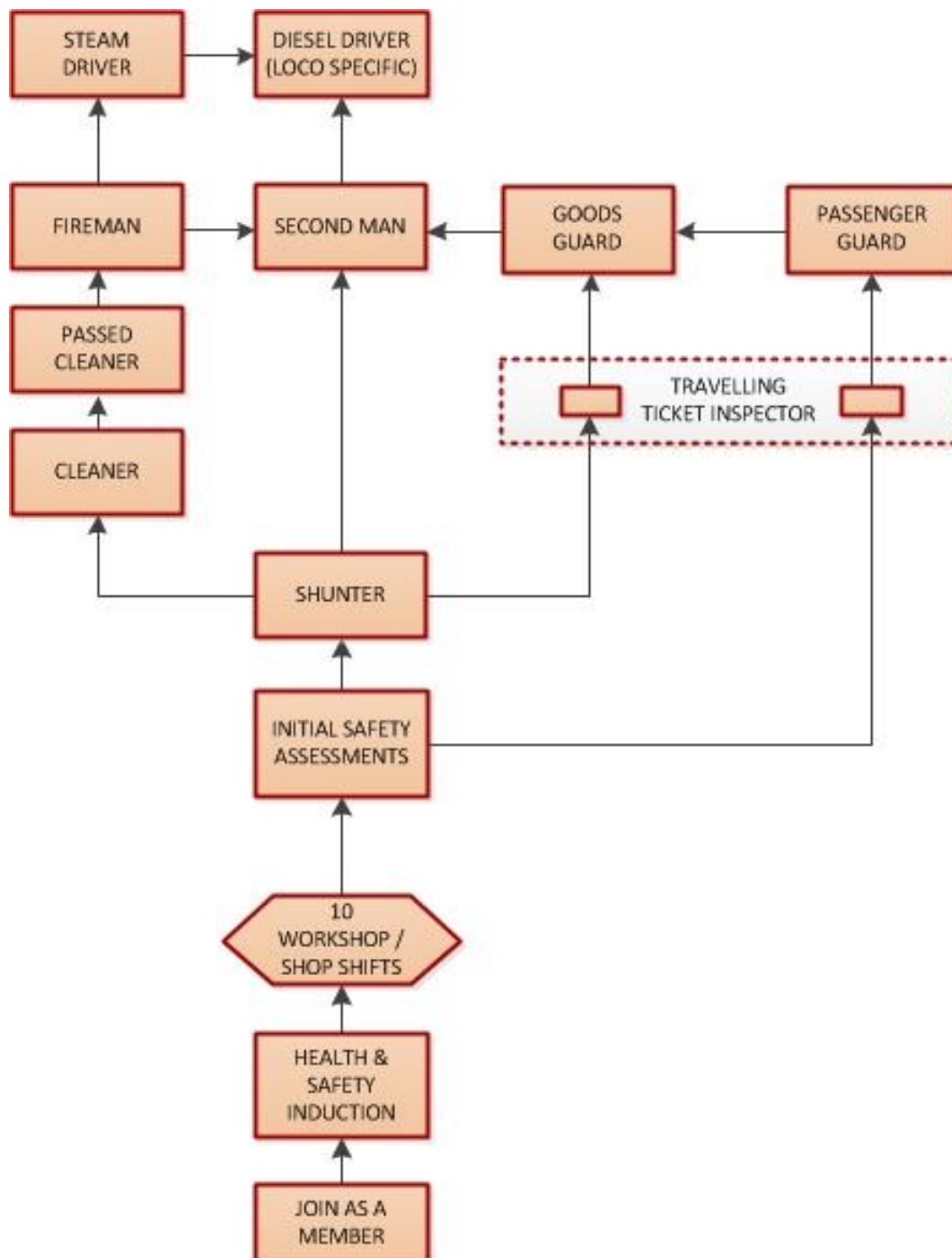


Middleton Railway – From joining to driving

It's a common question, how do I become a driver? Firstly, it takes time and patience. The more effort you put in the quicker you will become qualified crew. It's not always easy and not everyone can do it. But if you put enough time and effort in then you'll make it! But don't forget, there is always a lot to do at the railway other than driving!



The length of time to get to the top varies. From as little as three years, to many. Simply put, the more you turn up and volunteer, the quicker you will progress.

Still interested? Speak to Mark Calvert who will be able to point you in the right direction – Good luck!

Email – roster@middletonrailway.org.uk, Phone - 0845 680 1758