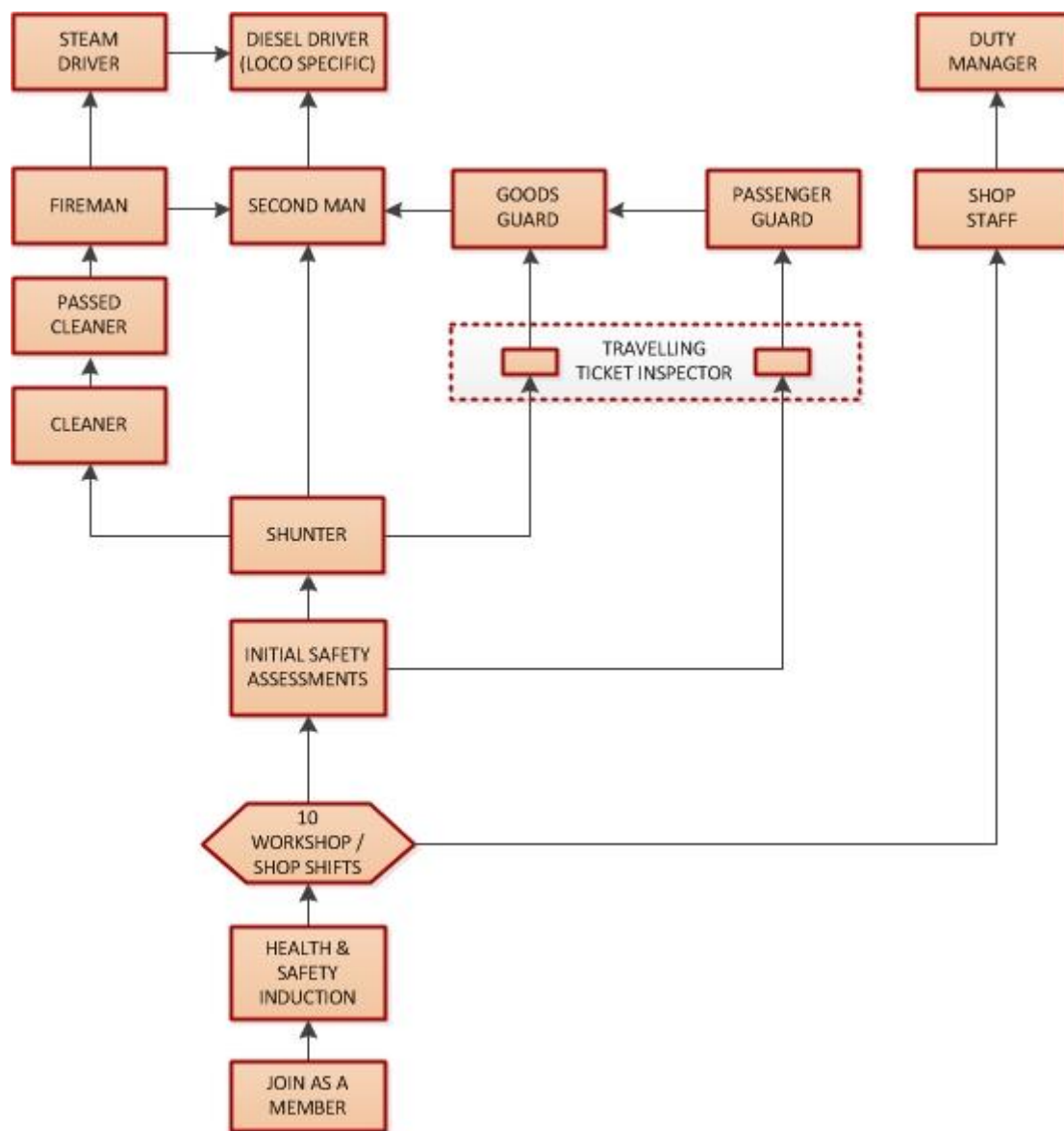


Middleton Railway – From joining to driving



Interested in becoming a volunteer, in the workshop, shop or elsewhere at the railway, or on the footplate?

The Middleton Railway is run entirely by volunteers, we have no paid staff and so rely on people like you to help us!

The flow chart shows the steps required to go from joining to footplate. There is a lot more to do than just drive the trains, everything from weeding to welding. Don't worry if you don't think you can do something, full training is given.

A few common questions;

How long does it take to go from joining to driving?

The more you come, the quicker you progress. If you volunteer every weekend you can expect to be passed out as a driver in as little as three years. Most people take longer, but simply put, if you put more effort and time in progress will be quicker! To start on the footplate, you first need to do some work in the shop and workshop to understand how the railway works.

I don't know anything, will I be any good?

Full training is given to all volunteers for the aspects of work they will be doing. We ask all volunteers to do various tasks, sometimes there are jobs to be done which are not the most pleasant, but we all muck in and do our fair share!

I've got a lot more questions, who can answer these?

Any of the staff will be happy to answer any questions you might have. Speak to the footplate crew, shop staff or guard, all will be happy to help!

Still interested, or more questions?

Phone us on 0845 680 1758

Or email us: info@middletonrailway.org.uk